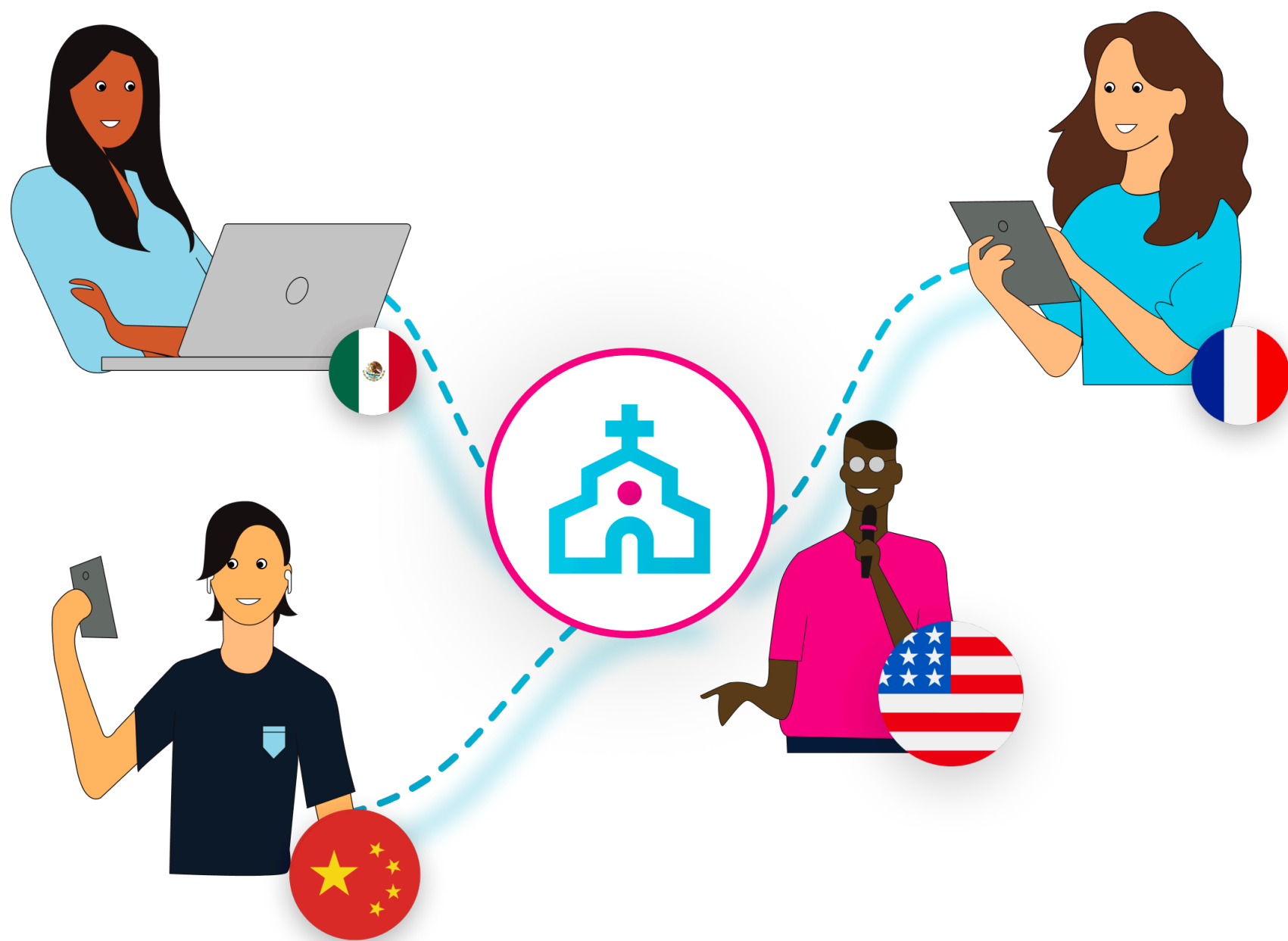


# AI Translation Guide

## 4-Steps to More Inclusive Church Services

Make Church Services  
More Inclusive and Accessible  
Live AI Translation & Captions



# Introduction

Most religious organizations have members whose native language is different from the language spoken at their weekly services. Some parishes have tried providing human interpreters to address this issue, but that solution is too expensive and complicated for most congregations to implement.

Members want to participate in weekly services, but are often restricted due to language barriers. Most churches in the US run their weekly services and other events in English and do not get the level of member engagement they desire.

This guide summarizes the options for making religious services more inclusive and accessible - and includes an overview on how AI translation and AI captioning solutions can work for your congregation.

## Translation Options

There are three options for addressing the language barrier at religious services.

### 1. Do Nothing

The most common solution is to do nothing. While this is obviously the cheapest and least time consuming in the short term, there are significant long run costs when members are unable to understand the services and do not fully engage.

### 2. Use Human Translators

Human translators have been used for centuries and are a common option for meetings and events around the world. Everyone has watched prominent events like sessions at the UN where attendees from 100+ countries around the world listen in real time to a presenter speaking in a language they are not familiar with that is translated into their language.

Traditional human powered live translation solutions require a multi-step process. The on-stage speakers give a speech or presentation in their native language. This is known as the source language. Two interpreters (per language) work in a booth, taking turns. The interpreter listens to the speaker and communicates the meaning of the words in the required language. The need for multiple interpreters, sound booths, and attendee listening devices make this solution hard to implement.

Human interpretation is a good option for large events which are planned months in advance and supported by large budgets and teams to coordinate all of the logistics. But the time and cost of offering human interpretation makes this option not viable for most religious organizations.

### 3. Use Live AI Translation and Captioning

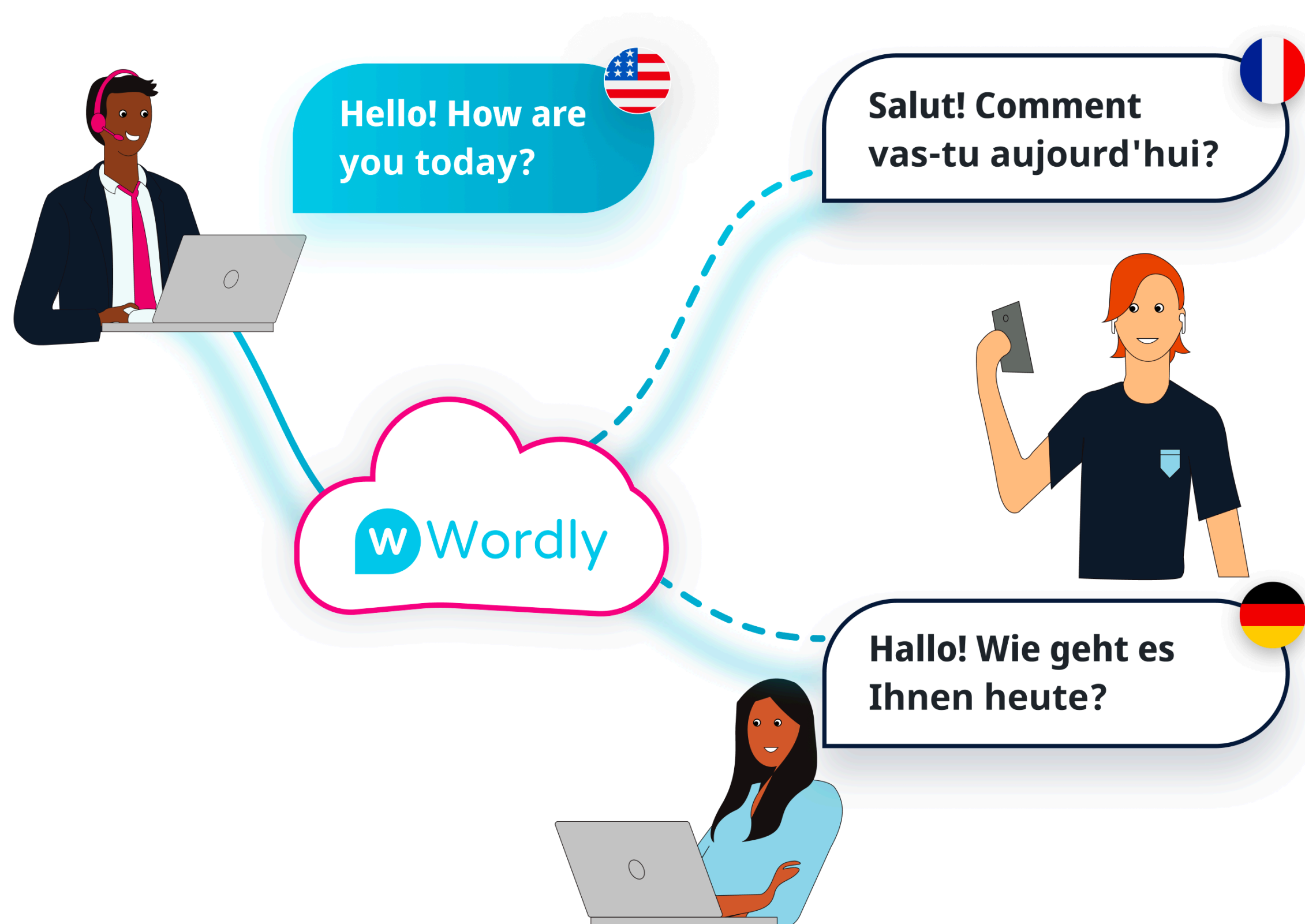
A fast-growing option is AI translation, also known as Machine Interpretation. These technology solutions are powered by an Artificial Intelligence (AI) platform and integrated with a secure cloud infrastructure, removing the need for human interpreters and special equipment. AI translation is being implemented across a wide range of markets, including religious organizations, local government, healthcare, and nonprofits.

# How Wordly Solves Church Translation Challenges

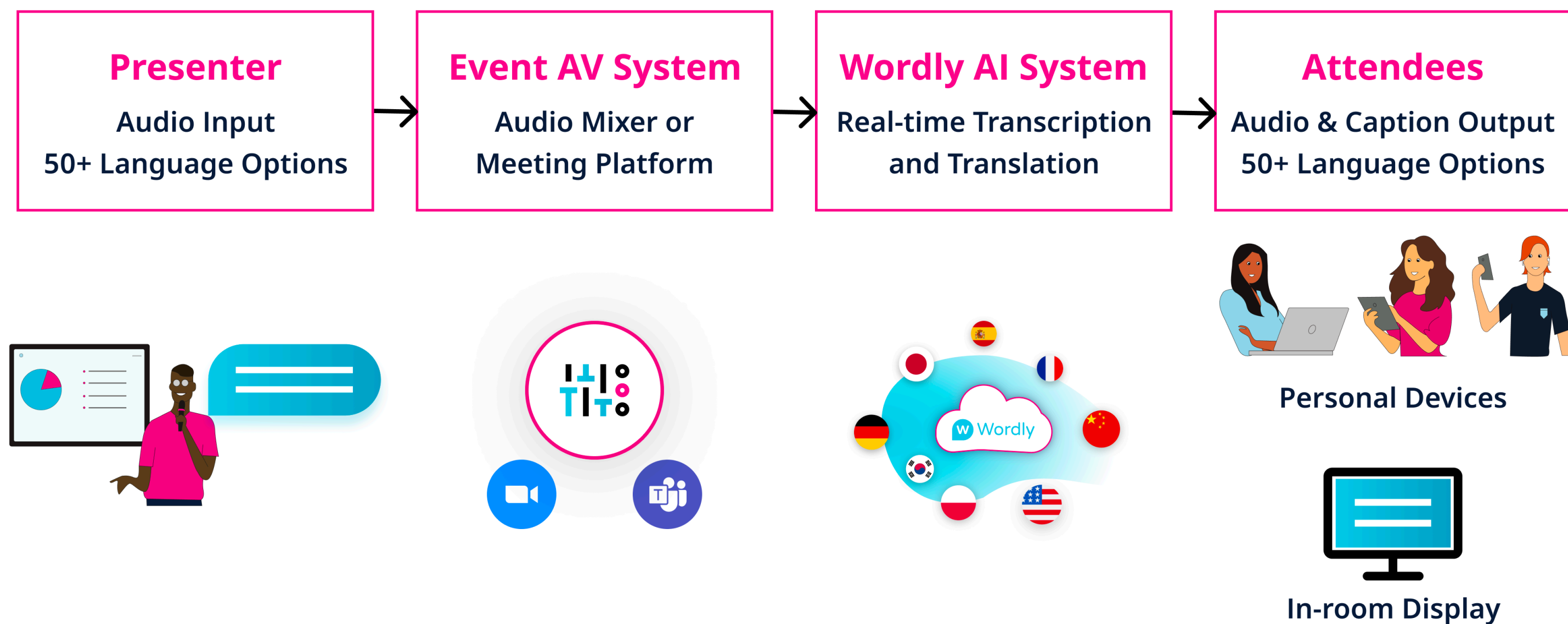
Wordly developed the industry's first 100% AI-powered live translation platform - providing a fast, easy, and affordable solution for today's global, multilingual, virtual world. Wordly is powered by AI and does not require human interpreters or special equipment.

Wordly enables you to address the multilingual challenge at religious services or any other events where attendees speak multiple languages.

Wordly enables churches to expand their community by allowing both speakers and attendees to participate in their preferred language. This makes attending your services more accessible for everyone.



# How AI-Powered Translation and Captioning Works



## Step 1

The audio mixer (or microphone) from the church is connected to a laptop (or tablet) which is used to log into the AI translation and captioning system. This helps ensure the AI system receives high quality sound input.

## Step 2

The presenter(s) speak in their preferred languages during the services. The AI system can manage participants speaking in multiple languages.

## Step 3

The system uses AI technology to transcribe and translate the spoken content into the preferred languages for each participant. AI systems can process and translate speech simultaneously into dozens of languages. The caption output is displayed in less than 0.5 seconds, providing the output in near real time. The translation software is capable of understanding different dialects and accents, so you can feel confident that the translation will be accurate and understood by all attendees.

## Step 4

Attendees can read along with captions or listen with their ear buds in their preferred language on their own computer or mobile device. Attendees access the translation and captions by scanning a QR code with their phone or visiting a URL from their computer. Attendees can be either in person or attend virtually via Zoom or another meeting platform. The captions can also be displayed in multiple languages on monitors positioned around the church hall so both presenters and attendees can see them.

## Benefits Of Using Wordly AI Translation and Captioning



### AI translation offers many benefits, including:

1. Grow congregation size
2. Increase member engagement and giving
3. Increase accessibility and inclusivity
4. Leverage a larger pool of speakers
5. Multiple output options - audio, caption, and transcripts
6. Supports virtual, in-person, and hybrid services
7. Works with any event platform - Zoom, Teams, Cvent, and more
8. Set up in minutes - no special hardware or sound booths
9. Very affordable - get dozens of languages for one low price
10. Meets information security and privacy compliance standards

# Wordly Church Translation Packages

We make it easy to add live translation and captioning to your weekly services with a comprehensive package that includes live AI translation along with customized support and training to get you up and running quickly.

The base package includes 52 hours of live translation and captioning which is enough to cover one weekly service for one year. If you have more than one service per week, or your services are longer than one hour, you can add additional hours to your Wordly package.

## The package includes:

**Live AI Translation and Captioning** - you get live translation of your services into both audio and text output - attendees can choose whether they want to listen and / or read.

**Extensive Language Options** - Each attendee can select their preferred language from dozens of options which come standard with every Wordly subscription. Since Wordly provides multi-directional translation, we can support 2,000+ language pairs (e.g., English to Spanish, Spanish to Vietnamese, French to Spanish, etc.). You can conduct the service in English, Spanish, or dozens of other Wordly supported languages.

**Customizable Glossaries** - You can create a customized glossary of names and other important terminology unique to your organization that you want to make sure are translated correctly.

**Flexible Delivery Formats** - You can offer Wordly both for in-person and virtual attendees via Zoom or other video platforms - there is no additional charge for using multiple formats to support hybrid services.

**Personalized Onboarding** - We will assign a Customer Success team member to guide you through the onboarding process. This includes account setup, admin training, integration assistance, translation glossary creation, dress rehearsal tests, presenter coaching, and technical support.

**Easy Setup** - Once you are onboarded, it will take less than 10 minutes to set up Wordly each week for your service.

**Easy Access** - Attendees can access Wordly in 2 easy steps. For in person events, they scan a QR code with their mobile phone, select their language, and then have instant access to live audio and text output. For virtual events, they click a link on their computer, select their language, and then have instant access to live audio and text output. You can also choose to have the captions displayed on monitors at your church so people can follow along without using their phones.

**Affordable Pricing** - Pricing is based on the number of hours you purchase and the number of weekly users. You get audio and caption output for all languages, along with text transcripts, for one fixed price. We offer volume discounts and religious organizations qualify for a 10% discount off standard prices. Since Wordly is powered by AI, you do not need to hire individual interpreters for each language. You can save 50-90% or more versus the cost of hiring human translators.

## About Wordly

Wordly provides industry leading AI-powered translation and captioning solutions for in-person events, virtual meetings, and video recordings. The Wordly platform provides live translation without the use of human interpreters - making it faster, easier, and more affordable to collaborate across multiple languages - leading to more inclusive, accessible, and engaging experiences. Speakers' words are automatically transcribed and translated into 50+ languages for attendees to choose from. Wordly is used by over 3 million people at businesses, industry associations, local governments, and religious organizations around the world.

For more information, visit [www.wordly.ai/](http://www.wordly.ai/).

**Special Church Bundle Offer** - Sign up for a free 30-minute AI Translation Readiness Assessment

Visit [www.wordly.ai/church-bundle-offer](http://www.wordly.ai/church-bundle-offer)

### Sample of Wordly Religious Organization Customers

