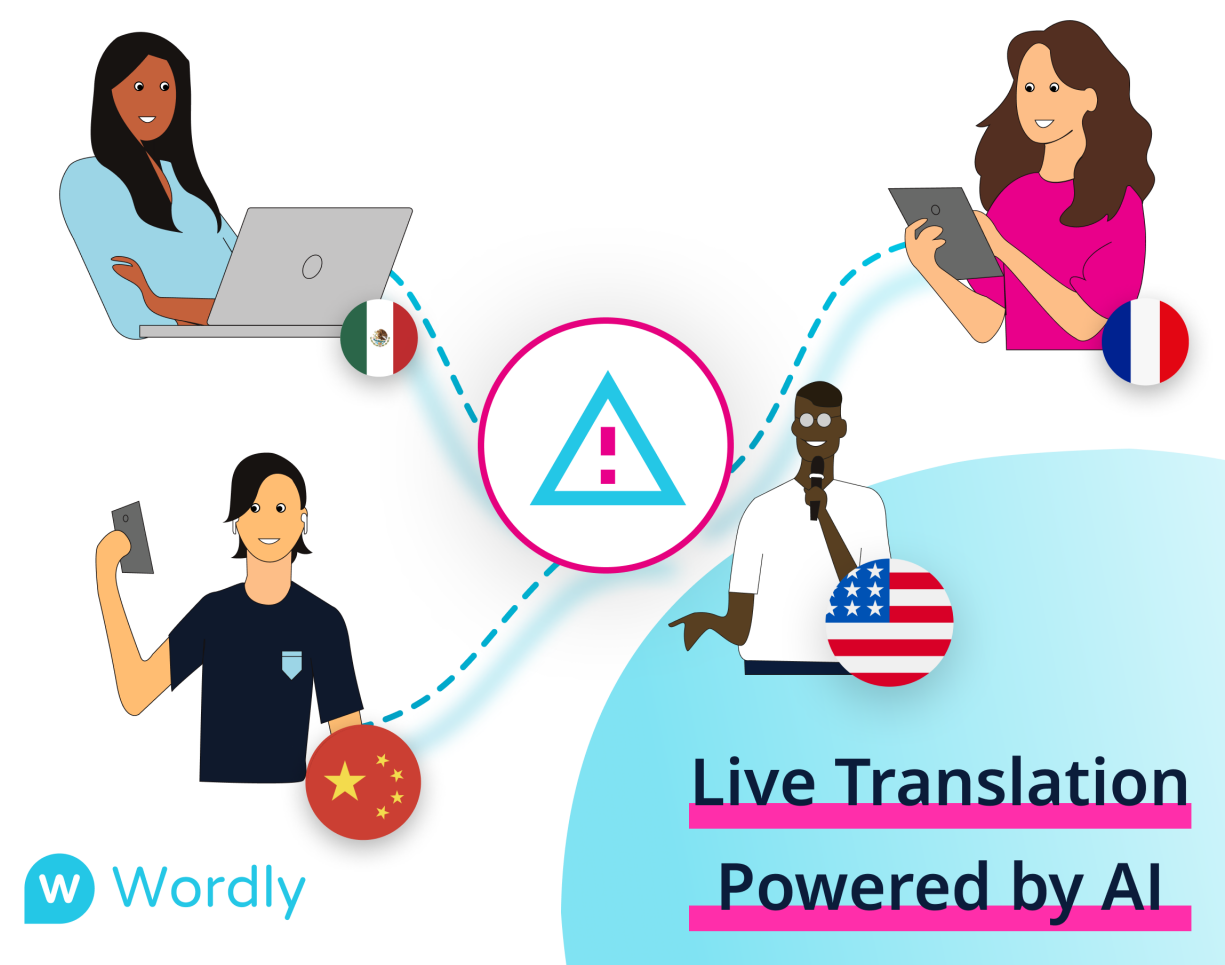


Breaking Language Barriers to Save Lives – How Wordly AI Translation Supports Public Safety in Any Crisis

Make **Public Safety Alerts**
More Engaging and Inclusive



Addressing Public Safety Challenges with Multilingual Audiences

In times of crisis - whether a natural disaster, health emergency, public safety threat, or other critical situation - delivering accurate, real-time information is crucial for saving lives. Yet, with 22% of the U.S. population speaking a language other than English at home, language barriers can hinder effective communication, leaving non-English speaking communities vulnerable to misinformation, confusion, and delayed response.

Wordly, the pioneer of AI translation, is transforming emergency communication by making public safety information universally accessible. By enabling government agencies, schools, healthcare providers, and other organizations to instantly communicate in dozens of languages, Wordly ensures diverse communities receive timely, life-saving updates. Whether it's an evacuation order, severe weather alert, public health advisory, or other emergency notification, Wordly helps break down language barriers—ensuring clarity, safety, and inclusivity when it matters most.



Overcoming Language Barriers to Keep Everyone Safe

Public safety emergencies present numerous communication challenges:

- Misinformation on social media can spread quickly, leading to confusion and fear.
- Language barriers prevent non-English speakers from accessing life-saving information, putting everyone at risk.
- Fast-moving crises demand real-time, accessible, and accurate updates.
- Inclusive communication is essential for community trust and effective crisis management.

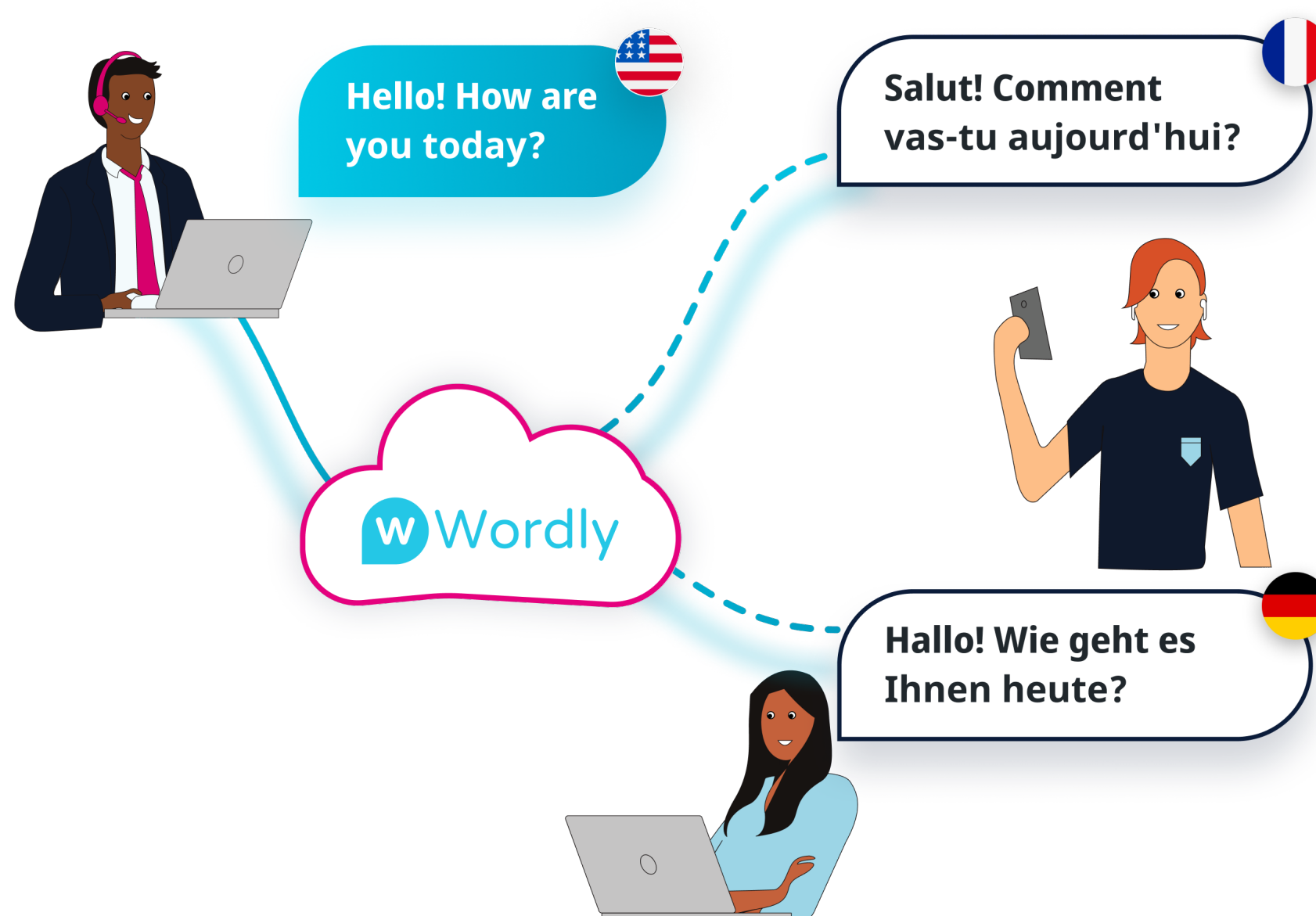
Solution: Breaking Language Barriers for Faster, Clearer Emergency Communication

Wordly provides an affordable, scalable solution for real-time interpretation in dozens of languages - eliminating the high costs and logistical challenges of human interpreters, such as scheduling, availability, and delays. Government agencies, emergency response teams, schools, healthcare providers, and other organizations can rely on Wordly to deliver timely, multilingual updates in a variety of critical situations.

Wordly can be used for:

- **Natural Disasters:** Deliver real-time emergency alerts during hurricanes, wildfires, earthquakes, and floods. For example, local officials can issue evacuation orders in multiple languages, ensuring non-English-speaking residents receive life-saving information instantly.
- **Health Crises:** Combat misinformation and provide accurate public health communication during disease outbreaks, such as measles or pandemics. Schools and government agencies can use Wordly to translate vaccination guidelines, safety measures, and emergency press briefings in dozens of languages, fostering trust and preventing panic.
- **Public Safety & School Incidents:** Communicate urgent updates during lockdowns, evacuations, and other emergencies in schools and public spaces, ensuring all individuals receive clear instructions in their preferred language.
- **Severe Weather Alerts:** Provide critical updates on extreme weather, storms, and hazardous conditions to diverse communities, enabling residents to take necessary precautions.
- **Emergency Response Coordination:** Equip first responders and law enforcement with scalable, real-time translation for multi-agency collaboration to enhance efficiency and response times in large-scale emergencies.

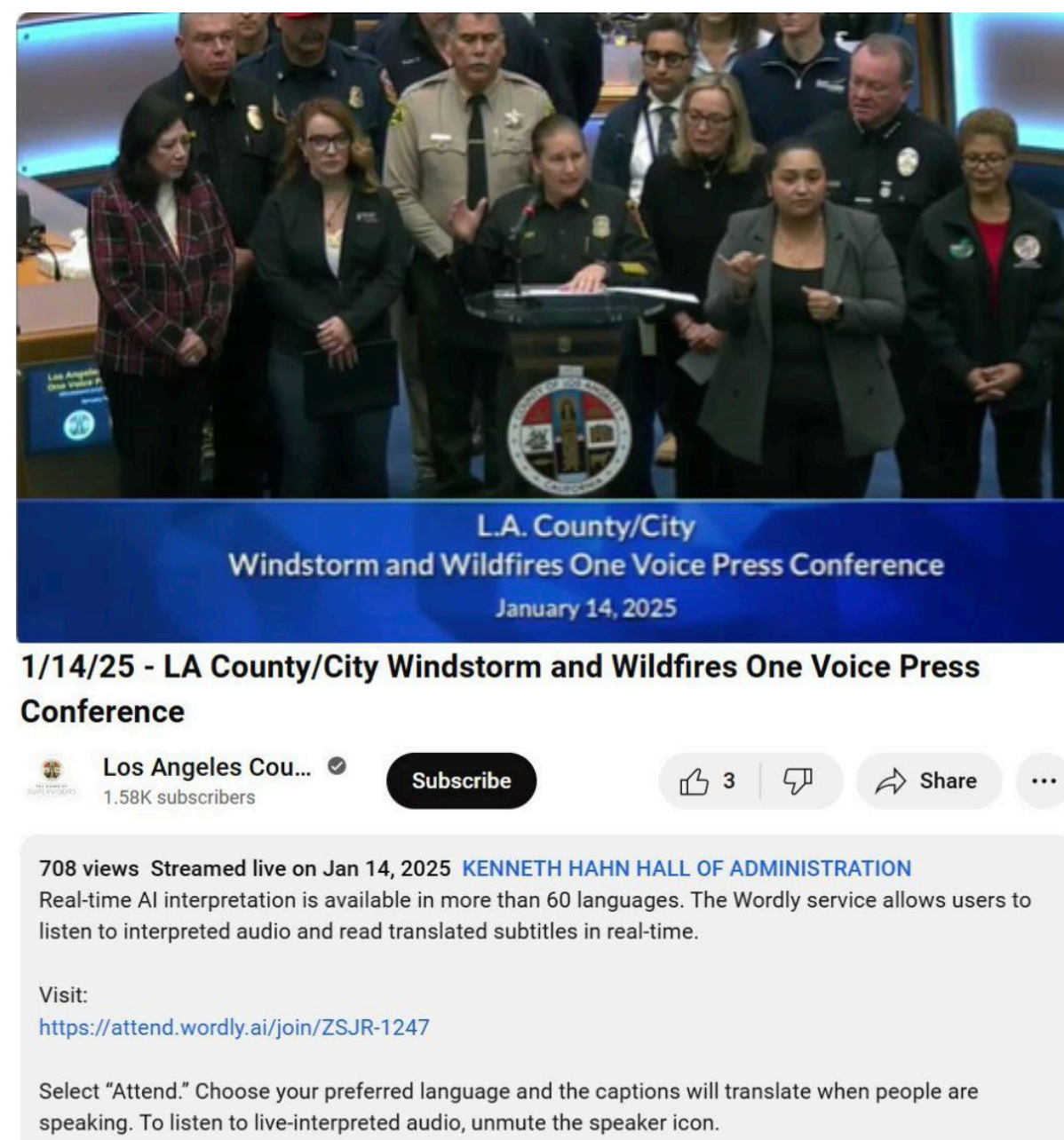
By breaking down language barriers, Wordly ensures all communities receive critical, real-time updates when they need them most.



Impact: Empowering Communities and Strengthening Safety Through Inclusive, Trust-Building Communication

By integrating AI multilingual communication with emergency response strategies, public agencies can significantly improve safety outcomes and community preparedness.

Los Angeles County serves as a compelling example of the impact Wordly can have during a crisis. Earlier this year, the county used Wordly during press briefings to provide real-time multilingual updates, combat misinformation, and ensure residents received critical information in their preferred language. With live translation available in dozens of languages, Los Angeles County successfully bridged language barriers and kept all communities informed.



Officials also took an active role in debunking misinformation, directing residents to verified sources and emphasizing the importance of relying on official updates. By prioritizing multilingual communication and real-time fact-checking, Los Angeles County ensured that every resident, regardless of language, had access to life-saving information during the crisis.



See a sample of [Wordly in action](#) during the LA County wildfires, providing real-time English-to-Spanish translation of press conferences to keep non-English speaking informed.

Conclusion: A New Standard for Public Safety Communication

In an increasingly diverse world, effective emergency communication must go beyond a one-size-fits-all approach. Language barriers can mean the difference between confusion and clarity, hesitation and action, or even life and death. By providing real-time multilingual translation, Wordly empowers organizations to deliver critical information instantly, ensuring no community is left behind in times of crisis.

Key Takeaways:

- **Multilingual Access:** Real-time AI translation ensures all communities receive critical updates, regardless of language barriers.
- **Misinformation Control:** Officials can provide accurate translations, reducing the spread of false information.
- **Community Trust & Safety:** Transparent, inclusive communication strengthens public confidence and cooperation during crises.

Wordly AI translation is revolutionizing emergency response by making public safety information universally accessible. As more organizations recognize the importance of language inclusivity in crisis communication, Wordly continues to play a vital role in breaking language barriers and saving lives.

About Wordly

Wordly provides live AI translation in dozens of languages, making meetings and events more inclusive, accessible, and engaging. The Wordly platform does not require human interpreters or special equipment – making it easy and affordable to communicate across multiple languages.

Over 4 million users at 2,000 organizations worldwide use Wordly for in-person and virtual sessions across various industries, including corporate, non-profit, government, education, and religious organizations.

For more information on Wordly, visit www.wordly.ai.

